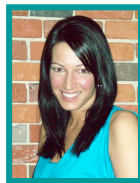


## News from JBM Logic : December 2009

### INTEGRA e-business™ is now available on Facebook and Twitter .

You can now follow INTEGRA e-business™ on Facebook and Twitter. You will receive the most recent information on INTEGRA's updates, e-commerce and the latest trend on company management. You will also find information on JBM's team. Click on the above icons to join us.

### Mireille Turner joined JBM Logic team.



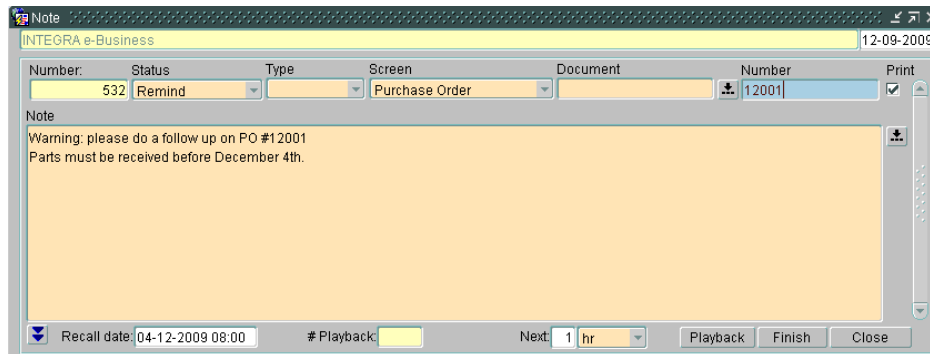
Mireille joined JBM's team last October. She is in charge of accounting, planning, resources, project scheduling and INTEGRA e-business upgrade calendar. Mireille has a university accounting diploma, and acquired a lot of experience in IT while she was working at CGI.

Wish you the best at JBM!

### Reminder Note: INTEGRA will help you remind it.

The next release 5.60.08 (schedule for the end of January 2010) will include a feature to let you create reminder notes; this tool is similar to Microsoft Outlook reminders.

These notes will be displayed based on the selected date/time. Each note can be assigned to an INTEGRA's entity (like purchase order, customer, etc.) You will be able to assign a reminder note to yourself or another employee so that this person can execute the task.



## Do you want to create reports simply and efficiently for **FREE**?

Apex is a tool that lets you create report quickly. With a few hours of training you will be able to create your own reports with functionalities such as: Sort on column, filter, sum, graphics, export to PDF or Excel.

Subscribe 5 users of your company, before January 31<sup>st</sup> 2010, on Facebook and/or Twitter and send an e-mail to [sales@jbmlogic.com](mailto:sales@jbmlogic.com) with the name and e-mail of these new INTEGRA e-business™ followers and JBM will install APEX, **for FREE**, on your servers.

The screenshots illustrate the Oracle Application Express interface for creating reports in the INTEGRA application. The top screenshot shows the 'Home' page with navigation tabs for 'Home', 'Application Builder', 'SQL Workshop', and 'Utilities'. It features icons for 'Application Builder', 'SQL Workshop', and 'Utilities', along with an 'Administration' menu. The middle screenshot shows the 'Menu' section with an 'Additional Reports' section containing dropdown menus for 'Customer', 'Inventory', 'Purchase', 'Sale', 'Manufacturing', 'Time', and 'Service'. The bottom screenshot shows the 'Monthly Sales' report interface, including a search bar, 'Rows: 100', and a 'Go' button. A 'Year = 2008' filter is selected, and a 'View Chart' button is visible. A bar chart displays 'Invoiced Amount' for the years 2008-01, 2008-03, 2008-05, and 2008-11. A context menu is open over the chart, listing options such as 'Select Columns', 'Filter', 'Sort', 'Control Break', 'Highlight', 'Compute', 'Aggregate', 'Chart', 'Flashback', 'Save Report', 'Reset', 'Help', and 'Download'.